



# Primavera™ P6 for STO

## Advanced Primavera™ P6 Training for Shutdown, Turnaround and Outage Planners, Schedulers, and Cost Controllers

*Primavera™ P6 for STO is an interactive 3-day workshop instructed by EJ (Ted) Lister. Learn to maximize the power of Primavera™ P6 to help pilot and navigate your STO events with resource leveling DSM (Dynamic Scheduling Methodology), DEM (Dynamic Execution Management) and EVPM (Earned Value Performance Management).*

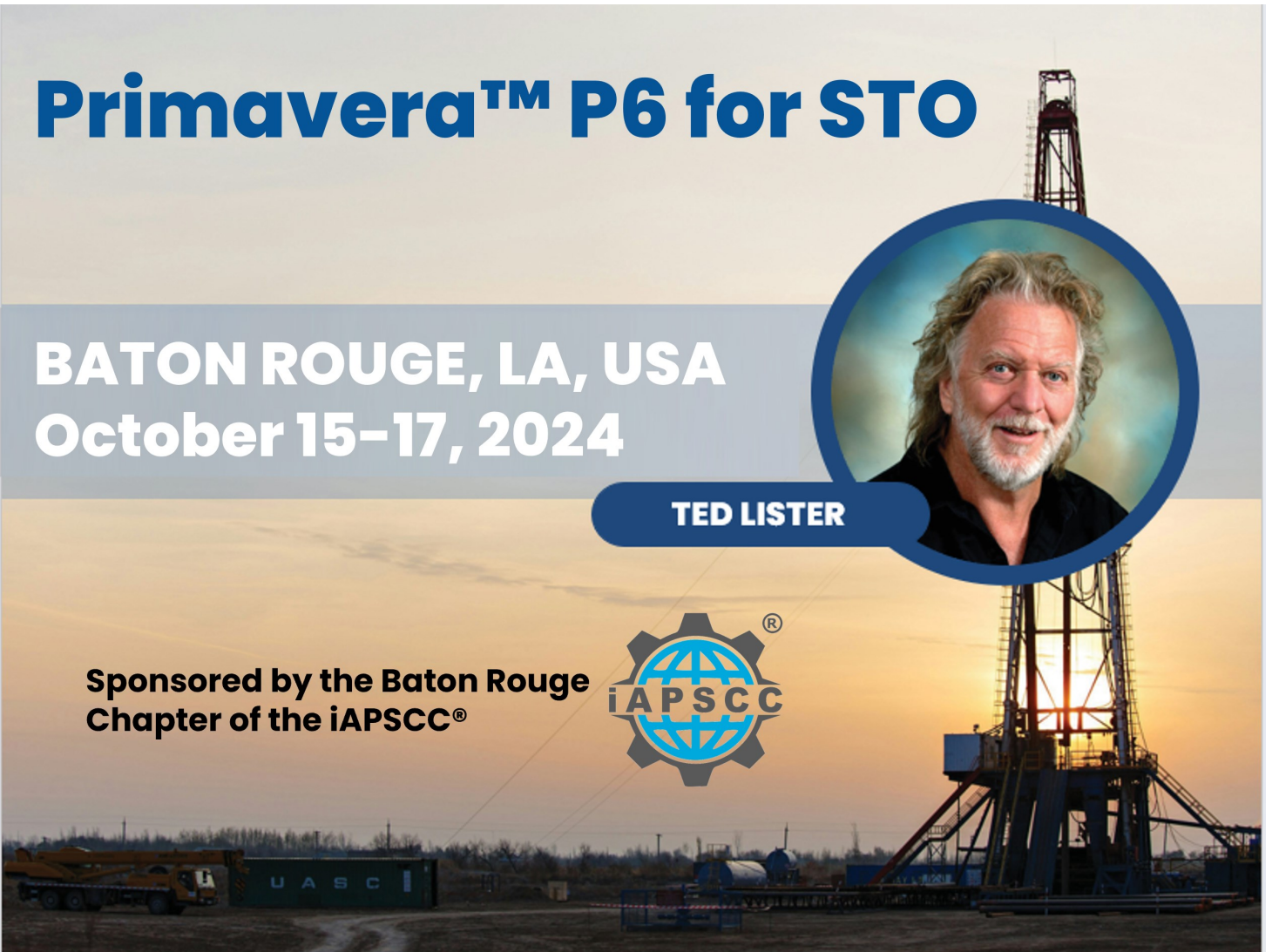
## Primavera™ P6 for STO

**BATON ROUGE, LA, USA**  
**October 15–17, 2024**



**TED LISTER**

**Sponsored by the Baton Rouge  
Chapter of the iAPSCC®**



## About this Unique Workshop

Safely navigating the planning and execution of STO Events (Shutdowns, Turnarounds, and Outages), even with competent people, the latest technology, and the best methodologies, can be challenging. The goal is to safely deliver your event on time and on budget while completing the planned scope that allows you to make your run and keep your stakeholders happy.

But here is the thing: it is not so much about time and budget as it is about safety, quality, and efficiency (direct resource utilization and indirect resource benefits). Because if we get these three KPIs right (without compromising scope), time and cost will take care of themselves. In other words, time and cost are an outcome of how well we execute the scope of work: safely, with quality, and efficiency, resulting in the shortest duration, lowest cost event!

***The Challenge: Execute complex, risky, expensive, and ever-changing STO events to achieve zero incidents, zero rework, and high tool-time efficiency requires a substantial amount of strategic planning, detailed work package planning, and dynamic scheduling to produce the most optimized plan: Lowest Cost, Shortest Duration, Fewest Resources without compromising scope.***

Our 3-day workshop combines theory, group discussion, and dynamic exercises in a simulated environment using live P6 examples - unlocking the power of navigating and piloting your STO Event using DSM (Dynamic Scheduling Methodology) and DEM (Dynamic Execution Management).

### **DSM/DEM with Primavera™ P6 for STO**

P6 Dynamic Scheduling Methodology and Dynamic Execution Management combine strategic planning during the investment phase of a STO event with tactical coordination during the Execution or burn phase to increase tool-time, reduce resources, enhance mobile and rental equipment utilization, optimize float, and ultimately control cost and schedule performance-this is known as piloting and navigating an event based on dynamic, everchanging conditions, with the fewest resources, and at the lowest risk/cost.

This workshop will ensure the entire Project Controls Team (Strategic Planners, Cost Analysts, Schedulers, Execution Coordinators)-operating out of a common war room can efficiently pilot and navigate their STO events without compromising safety or quality to achieve the lowest cost, shortest duration event ever!

### **KPI Dashboards for EVM (Earned Value Management)**

This workshop includes valuable lessons on creating KPI dashboards with Earned Value Management to ensure the STO Team can effectively pilot, and efficiently navigate a STO event, taking corrective action to optimize direct resource utilization, minimize indirect overhead costs (high earn, low burn), and control longest path jobs.

## Day 1: Planning and Estimating

The theme for this session is Planning and Estimating, where the student will learn the rules of creating a plan and estimating its resource requirements.

The student will learn to use the Field Planning Form prior to creating a layout in Primavera™ P6 and entering the plan within a specific Work Breakdown Structure bucket.

At the end of Day 1, the student will have a STO Event in Primavera™ P6 with several Worklist/ Work Order Plans assigned to their appropriate WBS bucket, ready for the next session (Day 2) to begin Programming and Scheduling.

8:30 am - 9:00 am Welcome and Course Objectives

9:00 am - 10:00 am Lesson 1 - Create a STO Event



10:00 am - 10:15 am Coffee Break

10:15 am - 10:30 am Presentation - AMS (Asset Management Systemization)

10:30 am - 11:00 am Lesson 2 - AMS using P6 WBS



11:00 am - 12:00 pm Lesson 3 - Establish AMS and Phase Calendars



12:00 pm - 1:00 pm Lunch

1:00 pm - 1:30 pm Lesson 4 - Creating Activity Codes



1:30 pm - 2:00 pm Lesson 5 - Creating Layouts



2:00 pm - 2:45 Lesson 6 - Managing Data



2:45 pm - 3:00 pm Coffee Break

3:00 pm - 4:00 pm Lesson 7 - Resources, Productivity and Costs



*The **Primavera™ P6 for STO** workshop covers theory, strategy, and actual hands-on practice in an interactive environment that drives engagement and learning. You leave with the ability to immediately put your learning into practice.*



## Day 2: Programming and Scheduling

The theme for this session is Programming and Scheduling, where the student learns the difference between them, and learns to create programming codes and assign them, both manually and globally. The student learns the various methods of scheduling; how when to apply them for the best outcome. The highlight of this session will be Dynamic Schedule Management (DSM) for driving, not monitoring their STO event.

At the end of Day 2, the student will have a STO Event in Primavera™ P6 that represents a Plan, in preparation for the next session of Execution Management and Control.

8:30 am – 9:00 am Presentation – Programming vs. Scheduling

9:00 am – 10:00 am Lesson 8 – Scheduling Level I to Level III



10:00 am – 10:15 am Coffee Break

10:15 am – 10:30 am Lesson 8 cont'd – Scheduling Level I to Level III



10:30 am – 12:00 pm Lesson 9 – Scheduling Level IV and Level V



12:00 pm – 1:00 pm Lunch

1:00 pm – 2:00 pm Lesson 9 cont'd – Scheduling Level IV and Level V

2:00 pm – 2:45 pm Lesson 10 – Resource Leveling



2:45 pm – 3:00 pm Coffee Break

3:00 pm – 4:00 pm Lesson 11 – Saving a Baseline



Primavera P6 Professional 21: TA2024-1 (Turnaround (Regulatory Asset Integrity) Event)

File Edit View Project Enterprise Tools Admin Help

Activities

Layout: 2024 TAR DSM Filter: All Activities

Activity Name	Scope Type	Activity Class	Risk	Permit	Task Priority	Activity Priority	Process Availability	Phase	Chronological Time	Manhours	Budget
WO Task: Open/Clean/Inspect/Repair (WO Task Short Description)							MDEA Unit			153h	\$38,728.02
DSM Priority 1							MDEA Unit			153h	\$38,728.02
Install Blinds as per Operations Blind Lists	Budgeted	Blind	Low	Cold	1	B	MDEA Unit	Open		9h	\$2,080.00
Remove Channel Cover	Budgeted	Remove	Low	Cold	1	D	MDEA Unit	Open		18h	\$3,120.00

Display: Current Project's Resources

Resource Name	P-Type	PF	Available Crews	Default Crew Size	Price / Unit	Overtime Allowed	Price / Unit2	Overtime Factor
Total			99h/h	11h/h				
P-1 Direct Labour (Movie Stars)			77h/h	8h/h				
Welder	P-1	7x24	5h/h	1h/h	\$34.00/h	Yes	\$12.00/h	1.4
PSV Pipelitting Crews	P-1	PF 1.4 - 65%	2h/h	1h/h	\$0.00/h	No		
PSV Overhaul Team	P-1	7x24	24h/h	0h/h	\$81.39/h	No		
Pipelitter	P-1	PF 1.4 - 65%	14h/h	1h/h	\$65.00/h	Yes	\$95.00/h	1.4
Mechanic/Millwright	P-1	Dayshift Mechanical	8h/h	1h/h	\$35.00/h	Yes	\$55.00/h	1.5
Cooling Tower Crews	P-1	7x24	12h/h	1h/h	\$0.00/h	No	\$0.00/h	
Boilermaker	P-1	7x24	12h/h	1h/h	\$65.00/h	Yes	\$95.00/h	1.4
P-2 Indirect/Direct (Supporting Cast)			18h/h	3h/h				
PSV Labourer	P-2	PF 1.4 - 65%	6h/h	2h/h	\$40.70/h	Yes	\$54.26/h	1.5
Labourer	P-2	PF 1.8 - 55%	12h/h	1h/h	\$65.00/h	Yes	\$95.00/h	1.5
P-3 Indirect (Production Crew)			4h/h	2h/h				
Inspector	P-3	7x24	2h/h	1h/h	\$65.00/h	Yes	\$95.00/h	1.4
Bundle Puller	P-3	7x24	2h/h	1h/h	\$250.00/h	No		

Display: Open Projects Only

15 Crew ..... 118 Crew  
12 Crew ..... 94 Crew  
9 Crew ..... 71 Crew  
6 Crew ..... 47 Crew  
3 Crew ..... 24 Crew

Portfolio: All Projects Access Mode: Shared Data Date: 09-Feb-24 Baseline: Turnaround (Regulatory Asset Integrity) Event - B1 User: ADMIN DB: STO NAV (Professional)

## Day 3: Execution Management and Control

The theme for this session is Execution Management and Control, where the student learns how to create reports for distribution (Daily Shift Reports) and analysis (Key Performance Reports) using Primavera™ P6 Report Writer with Filters and Batch Printing. The student creates a new Layout for Updating while establishing the methodology for obtaining accurate and timely Field Updates. The student learns to update and using DSM (Dynamic Schedule Management) learns to produce a new Daily Shift Report (Plan) to accommodate the Field Execution Coordinators based on resource and asset availability.

At the end of this session, the student will have a complete understanding of Planning, Estimating, Programming, Scheduling, Updating, and Reporting to ensure an effective and efficient STO event with the combined effort of Planners, Schedulers, and Field Execution Coordinators.

8:30 am - 9:00 am Presentation - Execution Management and Control

9:00 am - 10:00 am Lesson 12 - Creating Reports & Dashboards



10:00 am - 10:15 am Coffee Break

10:15 am - 10:30 am Lesson 12 cont'd - Creating Reports & Dashboards



10:30 am - 12:00 pm Lesson 13 - Updating Activities



12:00 pm - 1:00 pm Lunch

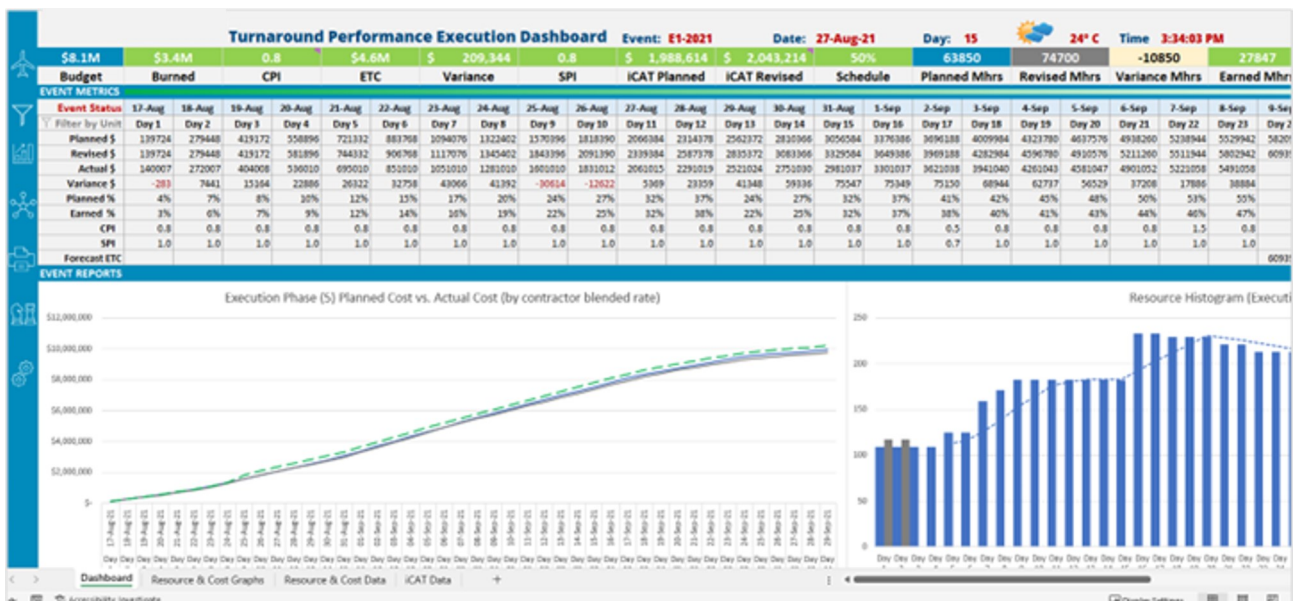
1:00 pm - 2:00 pm Presentation - Earned Value Performance Management

2:00 pm - 2:45 pm Lesson 14 - Earned-value Performance Management



2:45 pm - 3:00 pm Coffee Break

3:00 pm - 4:00 pm Review, and Wrap-Up



## Registration

**Who Should Attend?** Planners, Schedulers, Cost Controllers, and Execution Coordinators. The workshop is limited to 24 attendees; please book early to ensure your seat.

### Workshop Notes:

- Previous experience using Primavera™ P6 is required for this advanced workshop..
- Participants can work in groups of 2 or 4 and are required to bring a laptop to use during the workshop.
- Lesson files will be sent to registrants prior to this event to use during the workshop. .
- A free trial version of Primavera™ P6 will be offered to those who require it.

**Registration:** The registration fee for the course is \$1,595. A 10% discount is available for Sustaining Members of iAPSCC. Group Rates and private corporate courses are available by request.

## Venue

Hampton Inn & Suites Baton Rouge Downtown, 462 Lafayette St, Baton Rouge, LA 70801

## Refund Policy

Cancel any time prior to September 15, 2024, to receive a full refund. Transfers are permissible.

## Course Developer & Instructor: EJ (Ted) Lister

Ted Lister is an internationally recognized innovative leader, keynote speaker, and trainer on Asset and Maintenance Management, Shutdown and Turnaround Management, Operational Readiness, and Commissioning across various industry sectors. He is the author and co-author of several books, best-practice industry guidelines, training courses, materials, and tools.

Early in his career, Ted developed a dynamic scheduling methodology using Primavera™ P6 and MS Project® to pilot and navigate the everchanging execution environment of Shutdowns, Turnarounds, Outages, and EPC (Engineering, Procurement, Construction) Commissioning. Ted is a Red Seal Instrumentation/Electrician, Certified Chemical Technologist, and a seasoned STO practitioner, consultant, and coach.

For more than 30 years, Ted has been circling the globe and experiencing firsthand the challenges faced by asset owners from energy, mining, and heavy industry to effectively establish scope, build a budget, efficiently execute work without compromising safety or quality. He has learned what it takes to enhance STO event execution performance. From crash-and-burn lessons learned to innovative best practice methodologies and tools, you will benefit from his deep knowledge and experience during this unique event.



**Sponsored by the New Orleans  
Chapter of the iAPSCC®**



Primavera, and P6, are registered trademarks of Oracle and/or its affiliates.